

THREE GENERATIONS  
**MANN'S**  
EST. 1939

# Arcadian Harvest™

• CLASSIC •



Looking for that “next generation” of salad greens with the flavor profile of European lettuce varieties? Something to differentiate your menu from the competition? Look no further.

Mann’s Arcadian Harvest® combines the beauty of petite whole lettuce leaves with rustic appeal; providing unmatched lift on the plate with multidimensional leaves cut just once—at the point of harvest.

Versatile and ahead of the trend, Arcadian Harvest® is multi-flavored, multi-functional—it’s what your salad lovers are looking for.

Farm fresh from Mann’s - the family who brought you Broccolini®



Mexican Summer Salad



### Features & Benefits

- Plate ready. Washed and Ready to Eat
- Minimal preparation time
- Unique European Lettuce species, bred from various combinations of Green Leaf, Red Leaf, Tangos, Lolla Rosa, Batavia, and Oaks
- Fully mature, petite whole leaves that are more robust than baby lettuces
- Single Cut, once at the base, eliminating the pinking normally seen in "chopped" lettuces

**Arcadian:** rural, rustic, or pastoral, especially suggesting simple innocent contentment

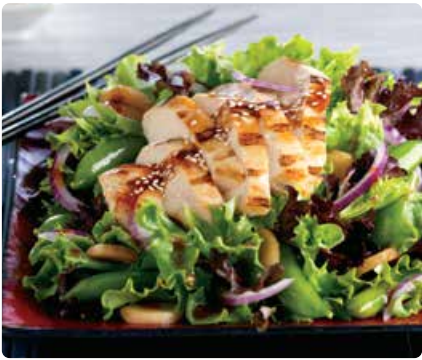
### Yield & Application

- 1 oz serving of Arcadian Harvest®, equals 1.5 oz of Spring Mix in plate coverage
- Multiple varieties and colors deliver an upscale appearance
- Provides the flavor profile of European lettuce varieties
- Versatility of use for salads, wraps or sandwiches
- Multidimensional nature of leaves provides unmatched lift on plate
- Stands up to dressings and heat better than other salad blends

| Nutrition Facts   |                           |
|---|---------------------------|
| Serving Size (85g)<br>Servings Per Container 16   |                           |
| Amount Per Serving  | As Served                 |
| <b>Calories 25</b>  | Calories From Fat 5       |
| % Daily Value   |                           |
| <b>Total Fat 0g</b>   | <b>0%</b>                 |
| Saturated Fat 0g  | <b>0%</b>                 |
| Trans Fat 0g  |                           |
| <b>Cholesterol 0mg</b>  | <b>0%</b>                 |
| <b>Sodium 80mg</b>  | <b>3%</b>                 |
| <b>Total Carbohydrate 4g</b>  | <b>1%</b>                 |
| Dietary Fiber 2g  | <b>8%</b>                 |
| Sugars 1g   |                           |
| <b>Protein 1g</b>   |                           |
| Vitamin A 280%  | Vitamin C 40%             |
| Calcium 6%  | Iron 25%                  |
| * Percent Daily Values are based on a 2,000 calorie diet. Your daily values may be higher or lower depending on your calorie needs: |                           |
| Calories: 2,000 2,500   |                           |
| Total Fat   | Less than 65g 80g         |
| Sat Fat   | Less than 20g 25g         |
| Cholesterol   | Less than 300mg 300mg     |
| Sodium  | Less than 2,400mg 2,400mg |
| Potassium   | 3,500mg 3,500mg           |
| Total Carbohydrate  | 300g 375g                 |
| Dietary Fiber   | 25g 30g                   |
| Calories per gram:<br>Fat 9 • Carbohydrate 4 • Protein 4  |                           |

### Product Specifications

| ITEM                      | PACK SIZE            | CARTON DIMENSION (H x W x D) | ITEM CODE | CARTONS/PALLET | TIE AND HIGH | CARTON CUBE | CARTON NET WT./LB. |
|---------------------------|----------------------|------------------------------|-----------|----------------|--------------|-------------|--------------------|
| Arcadian Harvest Classic® | 4 x 3 lb bags/carton | 20.00 x 12.875 x 14.938      | 02220     | 42             | 7/6          | 2.226       | 12 lbs.            |
| Arcadian Harvest Classic® | 1 x 3 lb bags/carton | 15.94 x 11.67 x 6.12         | 02222     | 150            | 10/15        | 0.66        | 3 lbs.             |



Arcadian Harvest® Asian Chicken Salad



Arcadian Harvest® Cobb Salad



Arcadian Harvest® Goat Cheese Crostini Salad

### Handling Information

- Refrigerate immediately upon delivery
- Store at 34° F
- Keep dry
- Rotate first in, first out

### Shelf Life

- 16 days

### Recipes

Foodservice recipes available from Mann Packing Company, Inc. Marketing Department  
 1333 Schilling Place  
 Salinas, CA 93901-4552  
 (831) 422.7405 Fax (831) 422.5171  
 sales@mannpacking.com



Salinas, California 93901 | 800.884.6266  
 veggiesmadeeasy.com